



Tangletown Neighborhood Association
Community Engagement Report
October 2017

This page was intentionally left blank.

Table of Contents

Overview	5
Neighborhood Survey Summary	6
Listening Sessions Summary	16
Key Informant Interviews Summary.....	27

This page was intentionally left blank.

Overview

As part of their 2017 strategic planning process, the Tangletown Neighborhood Association (TNA) Board of Directors invited those who live, work and spend time in the neighborhood to share their thoughts about the neighborhood and ideas for its future. The methods used to gather input included an online survey, listening sessions and key informant interviews.

This report shares summary information gathered during the months of June-October, 2017.

Neighborhood Survey Results

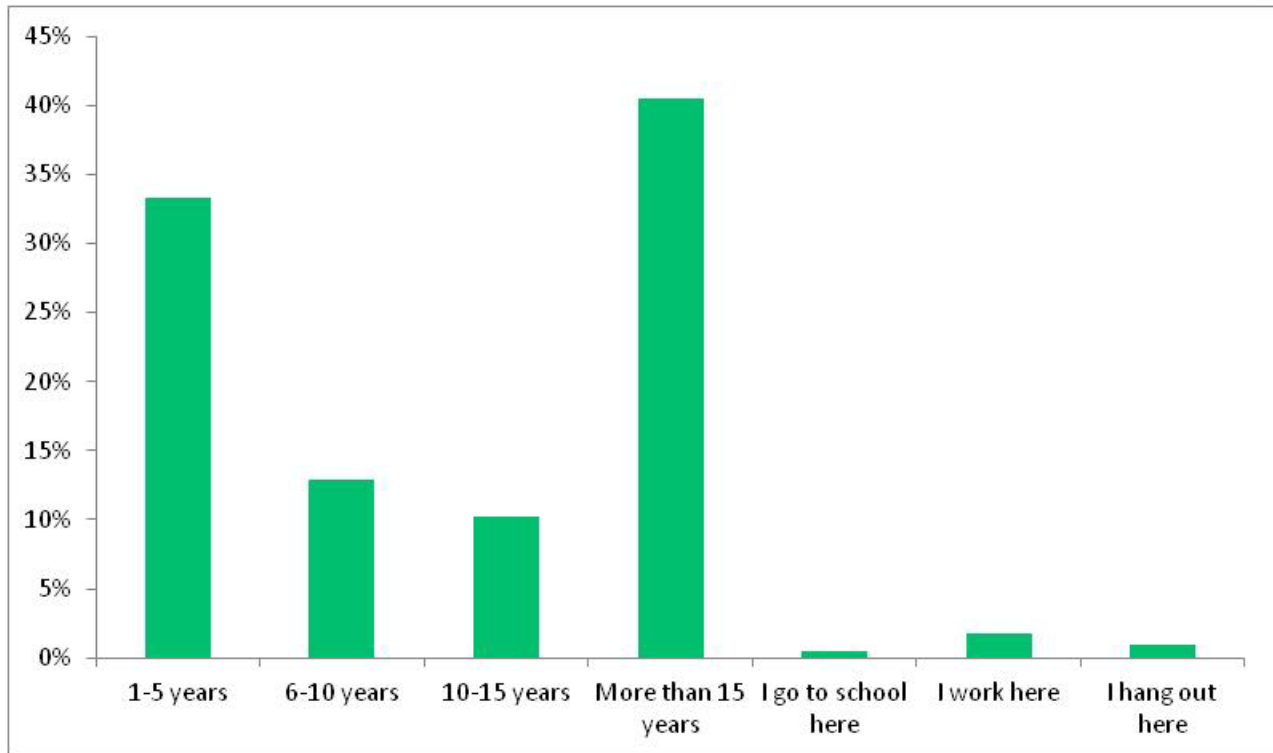
One of the methods used to gather input was an online survey. The survey was launched in June, and remained open through much of August.

The survey was shared through the TNA website, in three TNA e-newsletters, and through Facebook and NextDoor. In addition, Board members handed out cards directing people to the survey during the annual 4th of July festival and Lyndale Open Streets.

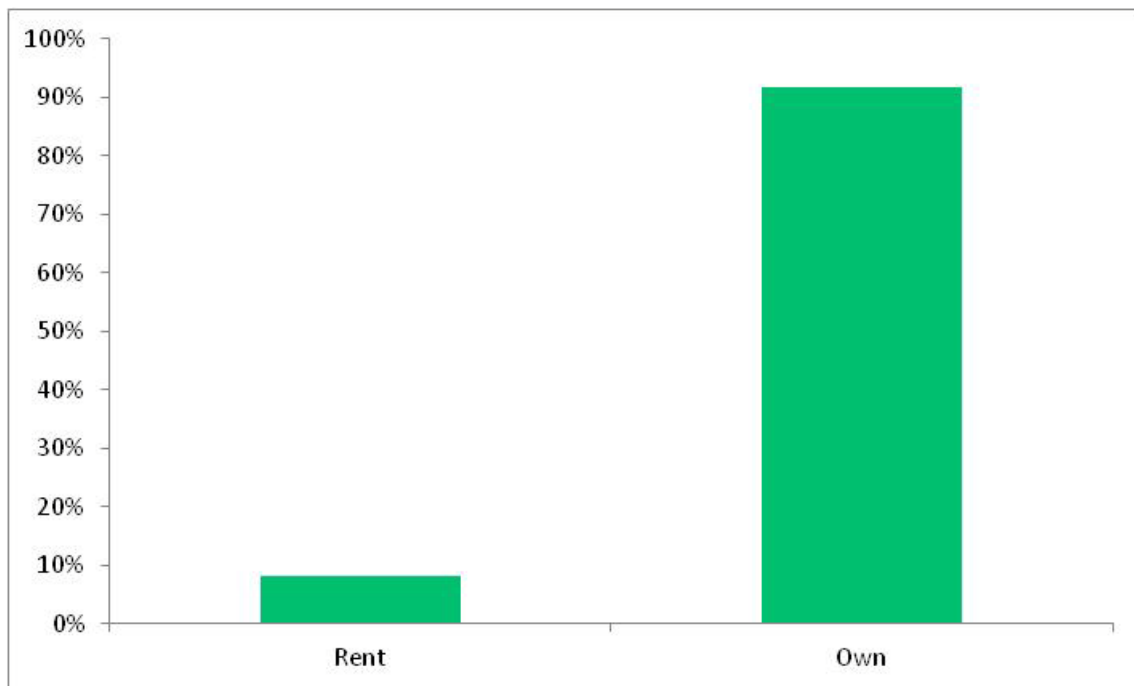
As an incentive for participating, the Board held a drawing at its August meeting for four gift cards to the neighborhood grocery store and restaurants.

When the survey ended in August, 225 people had participated.

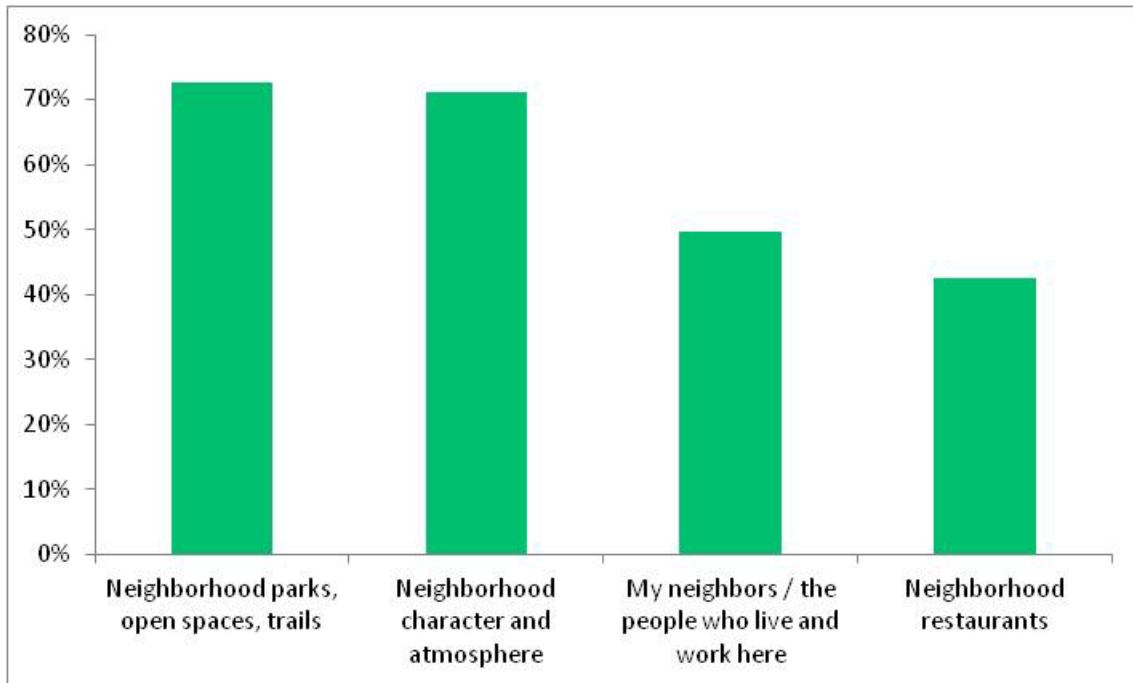
How long have you lived in the Tangletown neighborhood?



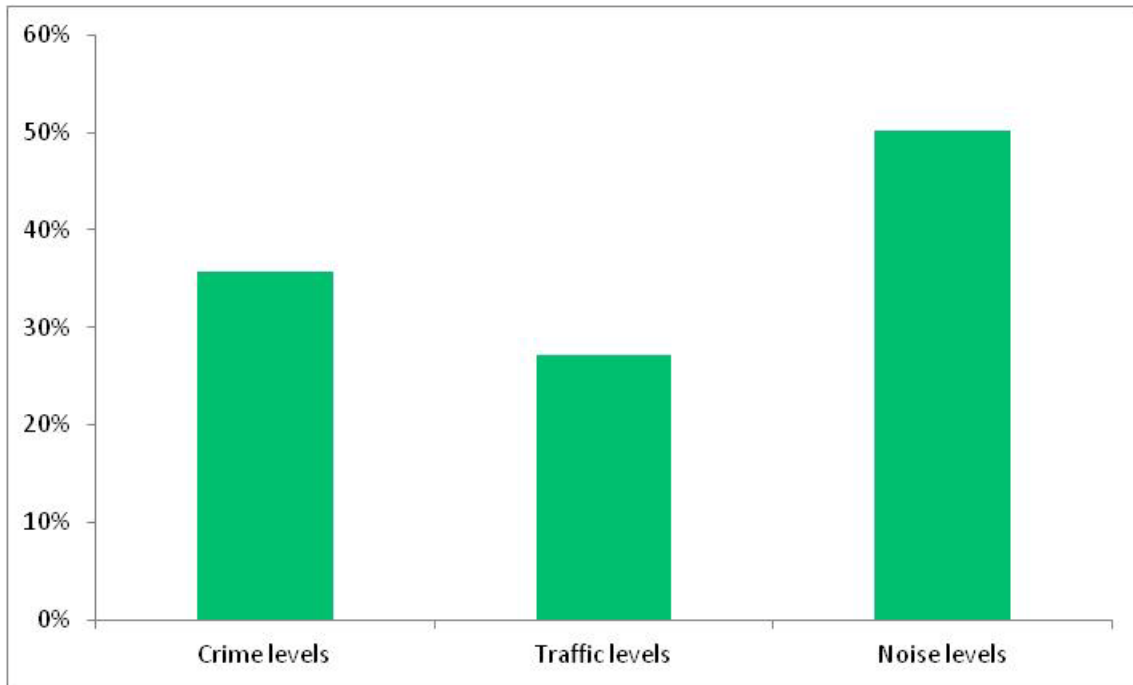
Do you rent or own your home?



What do you like most about living or working or hanging out in the Tangletown neighborhood?



What concerns do you have about living or working or hanging out in the Tangletown neighborhood?

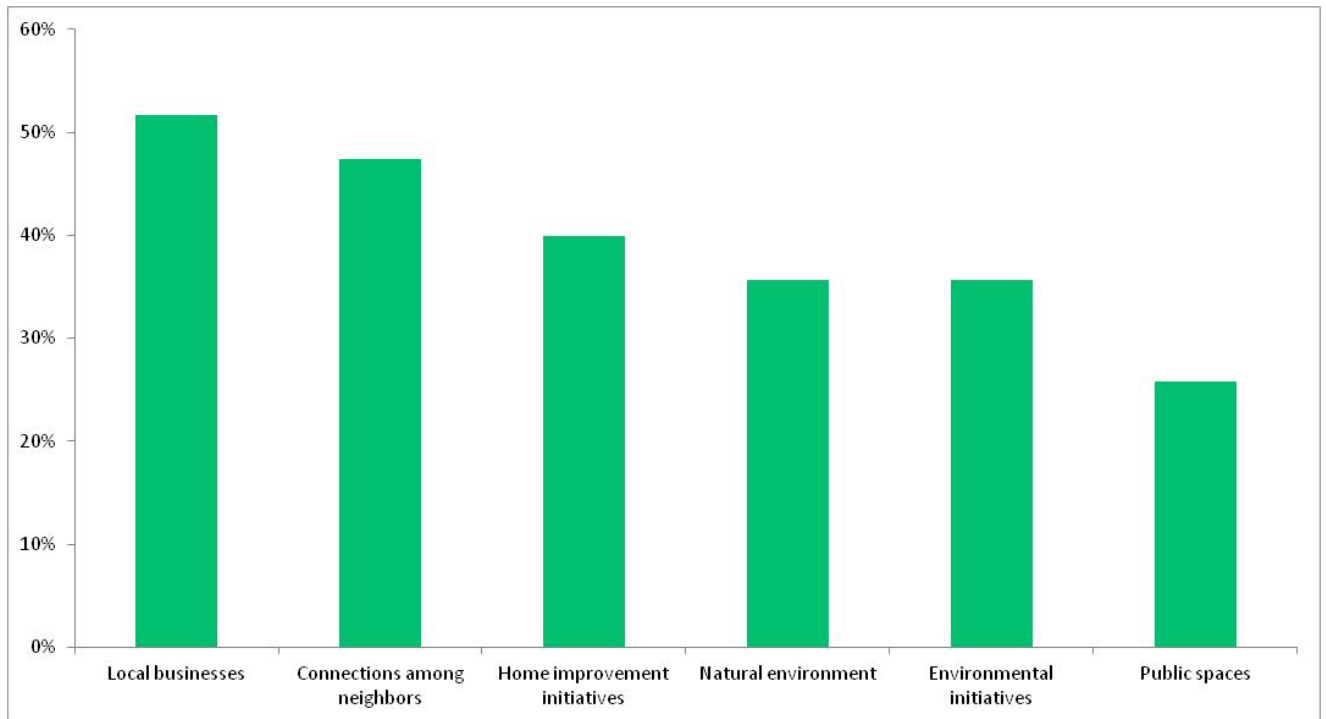


Responses to “Other” question

Mentioned by five or more respondents

- Airplane noise (17)
- Crime (7)
- Speed of traffic (5)
- Lack of socio-economic diversity (5)

What do you think are the most important priorities for action for the Tangletown Neighborhood Association in the next three years?

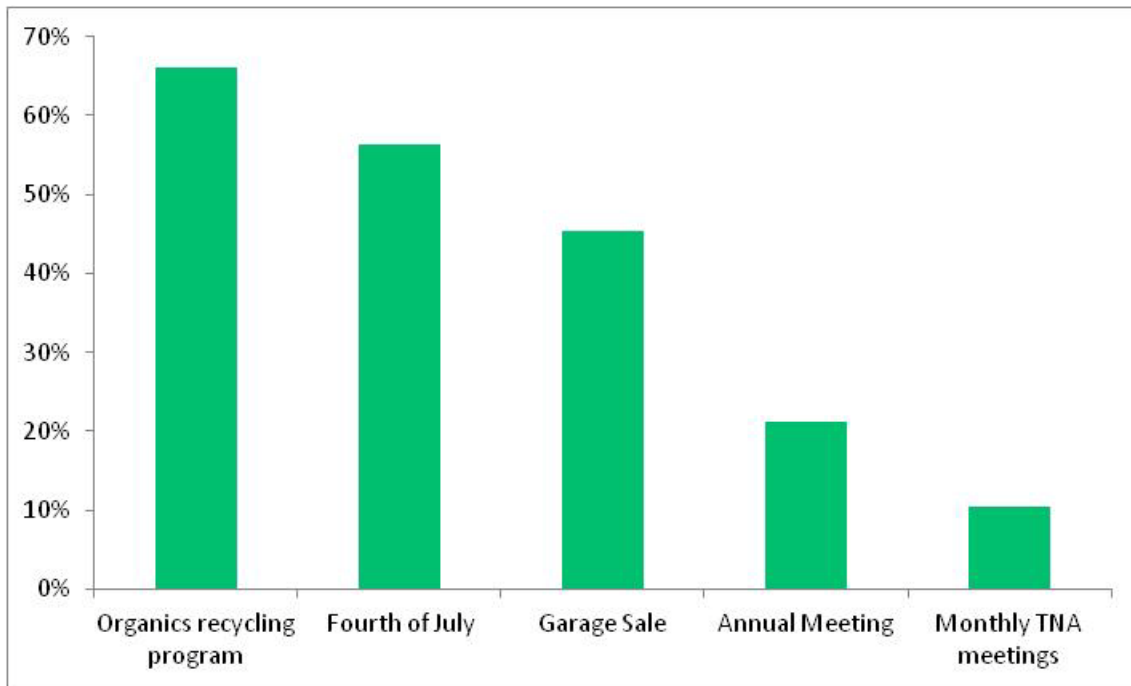


Responses to “Other” question

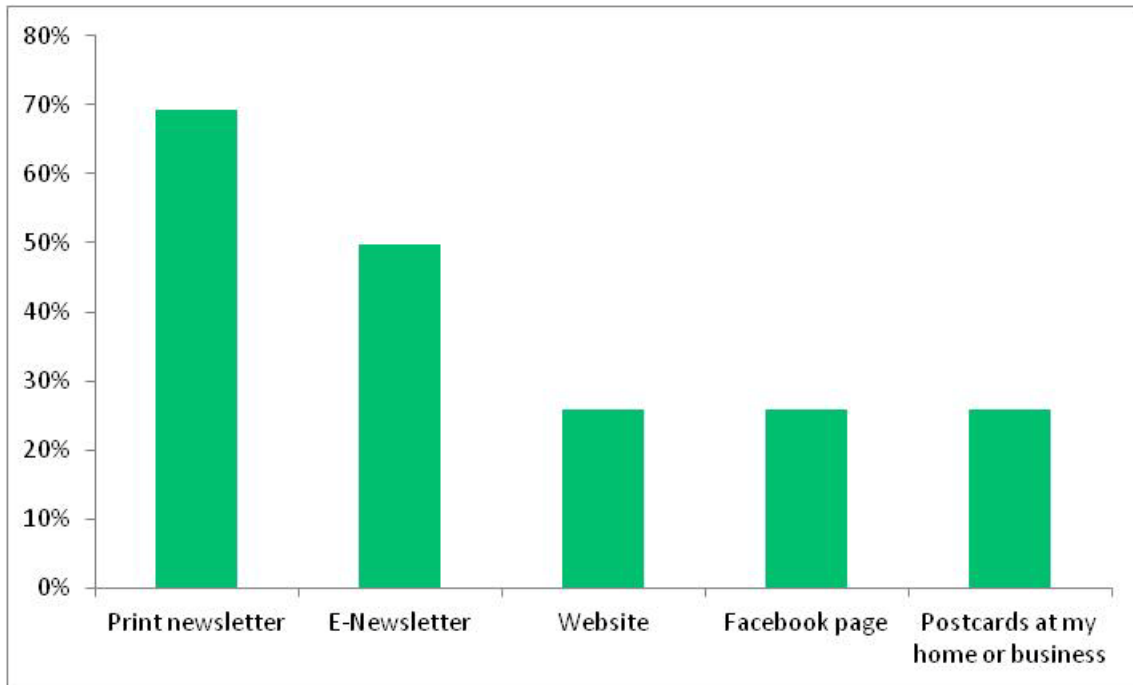
Mentioned by five or more respondents

- Affordable housing (7)
- Airplane noise (6)
- Traffic (5)
- Safety concerns (5)

Which of the following TNA-sponsored events have you participated in over the last year?



How do you get information about what the Tangletown Neighborhood Association is doing?

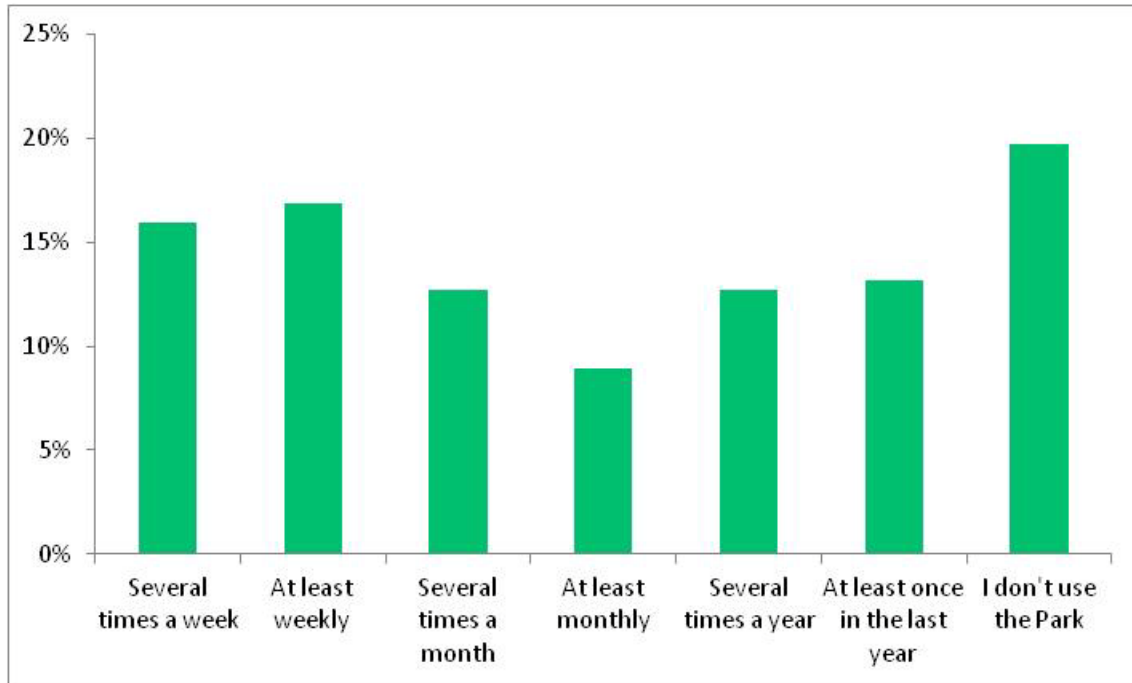


Other Places

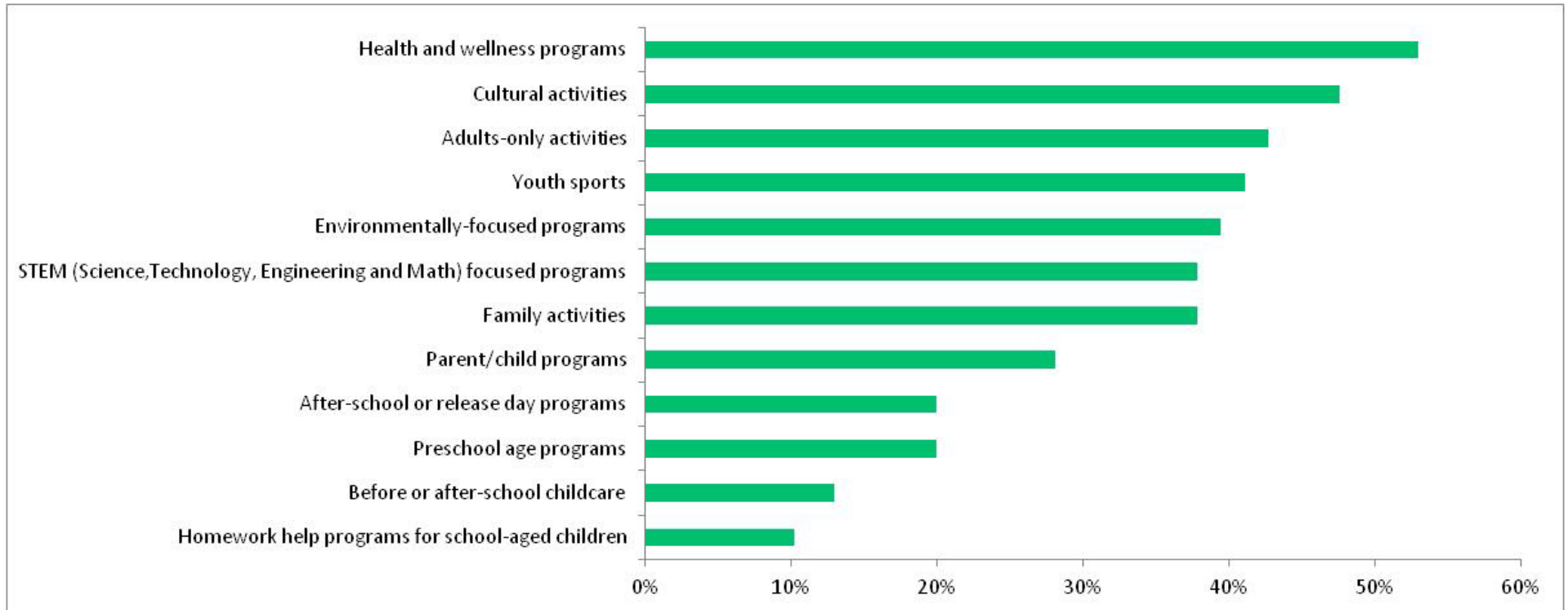
Mentioned by five or more respondents

- NextDoor

How frequently do you use Fuller Park?



Which of the following types of programs are you / would you be interested in at Fuller Park and Recreation Center?



Other Ideas

Mentioned by three or more respondents

- Yoga/Tai Chi

Is there anything else you would like to share with the Tangletown Board of Directors?

Mentioned by three or more respondents

- Crime and safety are ongoing concerns
- Support renovations at Fuller Park and Recreation Center
- Focus on the neighborhood green spaces and water tower
- Thank you! Great job!

Listening Sessions

A second way the TNA Board asked for input was through listening sessions. Six listening sessions were held in September and October, and 26 residents participated. In order to hear from a variety of residents, one session was held for senior citizens, and two sessions were held for renters.

For five of the sessions, residents were invited to Fuller Recreation Center to spend an hour and a half in a guided conversation about the neighborhood. One of the sessions was held in a community room at Creekside Commons.

Residents were invited to participate through a variety of methods: the TNA website, in TNA's e-newsletter, through Facebook and NextDoor, through personal invitations from Board members, through flyers dropped at residents' homes and tucked under apartment doors at some apartment buildings.

The following pages share a summary of residents' responses.

What are the main assets of this neighborhood?

Responses	# Responses
<p>Strong sense of community</p> <ul style="list-style-type: none"> - Friendly neighbors - Diversity of ages - Family-friendly - Children play outside - Active people who are out and about - Growing racial/ethnic/economic diversity 	15
<p>Natural environment</p> <ul style="list-style-type: none"> - Tree canopy - Green spaces - Fuller park - Minnehaha Creek 	13
<p>Well-kept homes</p> <ul style="list-style-type: none"> - People invest in their homes - Residents keep up their yards 	10
<p>Location</p> <ul style="list-style-type: none"> - Ease of getting around - Ease of getting to other parts of the city 	9
<p>Walkability</p> <p>Can walk to:</p> <ul style="list-style-type: none"> - Shops - Restaurants - Natural environments 	9
<p>Physical assets</p> <ul style="list-style-type: none"> - Architecture - Water tower - Old buildings - Tangled streets 	9

Businesses <ul style="list-style-type: none">- Great shops and restaurants in neighborhood- Great shops and restaurants nearby	8
Events, classes, programs <ul style="list-style-type: none">- There is a lot going in the area	8
Schools	6
Other <ul style="list-style-type: none">- Feels safe- Peaceful- Great transportation options- Creative people	5

What are the main challenges of the neighborhood?

Responses	# Responses
<p>Traffic Near the schools, along 50th Street, at 46th and Nicollet Avenue</p>	6
<p>Parking Especially around the high school, especially during school events</p>	5
<p>Crime Car break-ins, house break-ins, issues at 46th and Nicollet commercial strip</p>	5
<p>Airplane noise Much worse than it used to be, noise mitigation doesn't really help</p>	5
<p>Trash Especially from the high school students</p>	3
<p>Separation of the different parts of the neighborhoods Doesn't really feel like one neighborhood with the Creek in the middle</p>	2
<p>Other</p> <ul style="list-style-type: none"> ▪ Park building is in a state of disrepair ▪ Park grounds – the field in particular – are in a state of disrepair ▪ No one tends the triangles ▪ Lack of alternative transit options ▪ Lack of affordable housing options ▪ Lack of diversity among residents ▪ Cracked sidewalks ▪ State of the roads ▪ Snow removal ▪ Housing tear downs and rebuilds 	1

What could this neighborhood use more of to support its residents?

Ideas	# Responses
Fostering connections among people	2
Events at Fuller Park	2
Connecting people to services	2
More police presence – for public safety and to improve relationship with police	2
<p>Other</p> <ul style="list-style-type: none"> ▪ Community service project ▪ Connections to schools ▪ Early Childhood Family Education-like program ▪ Greater understanding of what it means to be a good neighbor – between residents, between residents and schools, between residents and businesses ▪ Nice Ride ▪ Skating rink ▪ Better youth sports programs, especially for more advanced athletes ▪ Corner store 	1

What have you seen done in other neighborhoods or other cities that excited you?

Ideas	# Responses
Public art / Community-specific art - e.g. Rabbit sculpture along Minnehaha Parkway	4
Regular communication from neighborhood organization - Helps you feel like you're "in the know" about what's happening in the city	2
Music in the Park - Have live music events at Fuller Park	2
Other <ul style="list-style-type: none"> ▪ Nice Ride ▪ Dog waste bag dispensers ▪ History walks ▪ Workshops about gardening and landscaping ▪ More neighborhood events ▪ Displays about neighborhood history ▪ Corner store ▪ Better youth athletic programs ▪ Open Streets ▪ Community service programs ▪ Hour Car ▪ Organized bike rides ▪ Alley garden awards ▪ Gardens along the freeway ▪ New curb cuts ▪ Community gardens ▪ Community focal point ▪ More varied businesses ▪ Intergenerational programs 	1

If TNA could support the next “big idea” for residents in the neighborhood, what do you imagine that could be?

Ideas	# Responses
<p>Create a stronger sense of community Use Fuller Park and Recreation Center for more creative community events:</p> <ul style="list-style-type: none"> - Oktoberfest - Holiday Market or art fair or student art fair - Watching the Twins, Lynx, state or national events <p>Bring back the luminaries on a winter night</p> <p>Start a community garden</p>	7
<p>Focus on branding, marketing and communications</p>	5
<p>Enhance resident and pedestrian safety</p>	3
<p>Connect and work with other neighborhoods</p>	2
<p>Other</p> <ul style="list-style-type: none"> ▪ Do <i>something</i> with the triangles ▪ Add public art to the neighborhood ▪ Create a tool sharing program ▪ Host a business showcase ▪ Organize neighborhood volunteers ▪ Establish partnerships with churches ▪ Build a Pickleball court ▪ Build a bocce ball court ▪ Bring back a corner store ▪ Establish one-sided parking on narrow streets 	1

Responses unique to seniors and renters

Seniors

- Seniors have a lot of free time – how might you capitalize on that?
- Seniors are available during week days for volunteer opportunities.
- Programs and events seem to focus much more on families – ensure that you are paying attention to the interests of all residents, including seniors
- Some seniors may need help to stay in their home – yard work, snow removal
- There is nowhere for people to move to within the neighborhood when they are ready to leave their single-family homes – how can you support bringing full life-cycle housing to the area?

Renters

- Ensure programs and events are open and marketed to single people and people from across the lifespan. Not all residents are part of young families, but many events are targeted to families – be inclusive.
- Consider sponsoring programs and events that young, single residents might be interested in.
- Understand that many renters are long-term residents and may not ever choose home ownership. Shift attitudes about renters – they are part of this neighborhood, too.

Are there potential partners that TNA could consider working with in the future?

Potential Partners	# Responses
Schools	5
Churches	4
Business – small business, businesses on borders, restaurants	4
Elected officials	2
City staff	2
Other suggestions <ul style="list-style-type: none"> ▪ Watershed District ▪ Fire Department ▪ Building Owners ▪ Other neighborhood organizations ▪ Open Streets 	1

How could TNA work better with residents?

Improve Communications

- Reach out using more than one method
 - Email, postcards, newsletters, social media, through other people
- Improve your website
- Create a central neighborhood notice board
- Share the results of this process
- Make listening sessions a regular part of your work

Improve Visibility

- Become more visible:
 - Brand yourselves
 - Share your mission and vision
 - Publicize your meetings
 - Share your accomplishments

Broaden Your Lens

- Create an opening for participation from:
 - All ages
 - All types of families
 - Single people
 - People from all cultures

Is there anything else you want the Board to know?

Responses

- Raise the profile of Tangletown neighborhood
- Focus on our neighborhood assets – the Creek, Fuller Park, the Water Tower
How can we pull more people to Fuller Park?
- Bring in more neighborhood-friendly businesses
- Identify what role you can play in bringing life-cycle housing to the neighborhood
- Address the negative effects that the Washburn High School stadium has on the neighborhood
- Thank you!

Key Informant Interviews

The third method the TNA Board used to gather input was through key informant interviews. The purpose of these interviews was to hear the perspectives of individuals who represent different sectors of the community, who work with different parts of the population, and who know a great deal about the Tangletown neighborhood.

Interviews were held with the following seven people:

Individuals Interviewed

Rhonda Dean
Principal
Washburn High School

Matt Perry
President
Southwest Business Association

Erin Rathke
Principal
Justice Page Middle School

Emily Goldthwaite Fries
Associate Minister
Mayflower Church

John Quincy
Council Member
Minneapolis City Council

Amanda Tottingham
Building Manager
Creekside Commons

Dylan Sirny
Owner and Chief Instructor
Hwa Rang Do Martial Art Academy

A summary of information from the interviews follows.

From your perspective, what are the primary issues that the Tangletown neighborhood is facing today?

Responses	
<p>Safety Pedestrian and bike safety - especially around the schools</p>	<p>Trash Especially around the schools</p>
<p>Traffic Especially around the schools</p>	<p>Parking Especially around the schools</p>
<p>Small businesses feeling extremely stressed Appreciate the ethics behind the city's new wage and sick leave laws, but they are negatively affecting small businesses.</p>	<p>Crime Most of it is small, but it affects everyone's sense of safety. Seeing more items stolen around people's identities.</p>
<p>Growing diversity Neighborhood demographics are shifting, becoming more racially / ethnically / economically diverse, but there is a perception in the broader community that there is – or should be – only one type of resident here.</p>	<p>Educational gaps These exist between student groups and need continued attention.</p>
<p>Community Building There is a need for a stronger sense of community.</p>	<p>Airplane noise Enough said.</p>

What issues do you think the neighborhood will face in the future?

Responses not repeated from last question	
Needs of the aging population Growing population. How can you stay on top of their needs?	Affordable housing How can the neighborhood accommodate different housing needs for different populations (low-income families, seniors)
Effect of city policies on small businesses Greater understanding of the realities that small businesses face. Having city policies that affect all businesses, regardless of size, is sometimes crushing small businesses. How can this story be told in a way that people can hear?	

From your perspective, what opportunities can TNA capitalize on in the future to best support the neighborhood?

Responses	
<p>Schools</p> <ul style="list-style-type: none"> ▪ Always ask how you could involve the schools ▪ Establish a communications connections with the schools ▪ Cross-promote events with the schools ▪ Sit on one another’s Boards / Site Councils / PTA ▪ Connect with schools for student volunteers ▪ Use the school buildings – especially in the evening 	<p>Community-Building</p> <ul style="list-style-type: none"> ▪ Ask how you can contribute to a culture of “we are all in this together” ▪ Create opportunities for people to come together ▪ Support home ownership programs for immigrant / refugee families ▪ Encourage businesses to promote specials for different religious holidays
<p>Collaboration</p> <ul style="list-style-type: none"> ▪ Consider joint projects with nearby neighborhood organizations, like <ul style="list-style-type: none"> - Housing loans - Business improvement - Senior programs - Road redesign 	<p>Safety</p> <ul style="list-style-type: none"> ▪ Consider partnering with other city entities to create pedestrian crossings ▪ Create a new “frame” through which to view safety work – not a “<i>Crime and Safety</i>” frame anymore, but a “<i>Community Engagement and Safety</i>” frame

Businesses

- Encourage residents to support the local economy
- Partner with businesses to promote walking and biking in the neighborhood
- Support small businesses in branding themselves as part of this neighborhood
- Partner with other neighborhood organizations to find businesses to fill empty commercial spaces.
- Work across neighborhood lines at major commercial intersections to promote shared projects focused on businesses
- Make 48th and Grand Ave. a Designated Neighborhood Commercial Node
- Share your business-friendly approach with neighboring neighborhoods
- (Bring back? Keep on doing?) Façade improvement program

What role might TNA play in addressing any of these issues and/or opportunities?

Responses	
<p>Schools</p> <ul style="list-style-type: none"> ▪ Create stronger partnerships with the city and county to address traffic, pedestrian safety and bike safety ▪ Partner on back-to-school night at the start of the school year 	<p>Affordable Housing</p> <ul style="list-style-type: none"> ▪ Partner across neighborhood organizations to pool housing funds toward affordable housing
<p>Collaboration</p> <ul style="list-style-type: none"> ▪ Work with other neighborhood organizations to address common challenges ▪ Be a mentor organization to other neighborhood organizations 	<p>Safety</p> <ul style="list-style-type: none"> ▪ Connect with block leaders ▪ Work with City of Minneapolis staff on pedestrian safety and bike safety around schools
<p>Aging Population</p> <ul style="list-style-type: none"> ▪ Define your role in addressing the needs of the aging population 	<p>Volunteer Projects</p> <ul style="list-style-type: none"> ▪ Tend the green space along the 35W sound wall
<p>Green Initiatives</p> <ul style="list-style-type: none"> ▪ Link the airport noise mitigation program to energy conservation and solar initiatives. ▪ Link building managers to the Commercial Property Assessed Clean Energy (PACE) program ▪ Link solar gardens / fields with pollinator gardens 	<p>Community-Building</p> <ul style="list-style-type: none"> ▪ Create a small grants program for individuals, organizations or non-profits to carry out community engagement ▪ Create personal relationships with members of the immigrant / refugee population – they will be more likely to participate in local events if they have a connection to an individual ▪ Offer opportunities for the children of immigrant / refugee families – they are the door into connections with parents

Businesses

- Partner across neighborhood lines to amplify business nodes
- Lead residents to local businesses
- Partner with local businesses to sponsor and promote events, offer prizes, etc.
- Support business to be leaders on issues that matter to residents, like LeMac Cleaners project. Could there be a solar array project with local businesses?
- Grant program for small businesses
- Employment grant for small businesses

How could TNA be a better partner to your organization in the future?

Responses

Schools

- Help up get more trash bins into the neighborhood near the schools, especially one and two blocks away
- Share information and updates about Washburn High School and Page Middle School through your communications tools
- Be an ally in your communication about growth at Washburn High School – frame the growth and energy in a positive light
- Ask the schools to share information about the neighborhood with staff, students and parents
- Lead a discussion with the schools and neighbors about parking challenges near high school
- Volunteer for events at the school
- Table at events at the schools

John Quincy, City Council Member

- Connect with him or his office to tap into the wealth of knowledge that city staff have – regarding neighborhood issues, for speakers at meetings or forums, etc.
- Invite him to be part of anything you need him to be part of

Dylan Sirny, Hwa Rang Do

- Look to small businesses to sponsor the 4th of July event, to have booths there
- Encourage businesses to make a donation to a raffle, then offer them space for a booth

Matt Perry, Southwest Business Association

- You are a great partner already. Take steps to ensure sustainability of that partnership.
- Let other neighborhood organizations know that SWBA has been a good partner. Encourage them to connect with SWBA.
- Partner with SWBA in answering questions about what home-based business owners need from the business association, and in promoting SWBA as a resource to small businesses
- Communicate and stay in touch. Have Board members attend one another's meetings.
- Could SWBA add items to your print and electronic newsletter?

Emily Goldthwaite Fries, Mayflower Church

- Support a community solar project – make solar energy accessible for lower income people.

Amanda Tottingham, Creekside Commons

- Come and join the events and programs that Mayflower Church sponsors for Creekside Commons residents
 - Somali tea making
 - Homework Club
 - English Language Learner classes
 - Backpack project

Which other organizations do you think TNA should consider as partners in their work?

Responses	
<ul style="list-style-type: none">▪ Washburn High School Site Committee▪ Justice Page Middle School▪ The school's Parent-Teacher Association.▪ City of Minneapolis and Hennepin County regarding traffic issues, pedestrian safety and bike safety▪ Park Board▪ Watershed District▪ Healthy Seniors programs▪ Other neighborhood organizations – what joint projects could you do?	<ul style="list-style-type: none">▪ Open Streets▪ Southwest Business Association▪ Local businesses▪ MSP FairSkies Coalition▪ VEAP (Volunteers Enlisted to Assist People)▪ TRUST – consortium of congregations that connecting seniors, families and youth to needed services like Meals on Wheels, household chores, home rehabilitation, etc.▪ Lauren Anderson – Zero Waste leader

